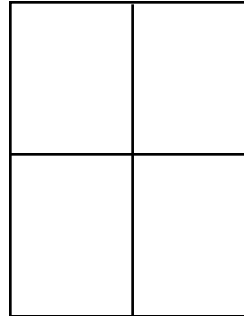


**St. Charles Embassy Suites Measurements** (approximate measurements that Megan took in '08)

Atrium banister 50½” white walls with wood railing, then metal open-bar with plants for 12ft.

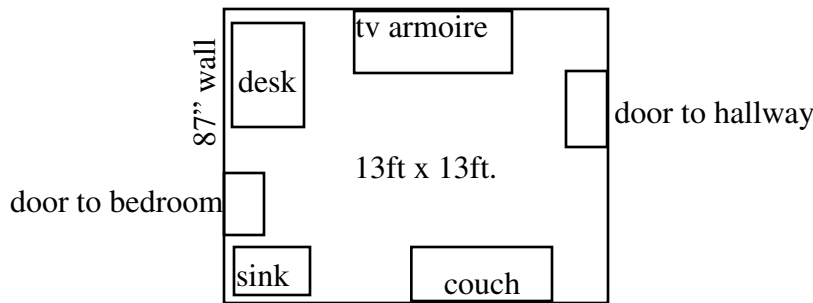
Each room has a 52” x 90” four square window. Each individual window is 24” x 42½” with safety square glass in a metal casing with a 2” ledge then a 1” ledge.



There is a small area 12” x 18” outside each door to the right or left for a small display or table.

The suite door is wood. 35” x 80”. There is an 8” wall space above the door.

The hallway to back corner suites is 8ft.



Each suite has a TV armoire that is 38” x 69” x 26”. There is 34” above tv armoire to ceiling. Many exhibitors moved their light up there.

There is a desk/table that is 31” x 54” x 30” high. I had three chairs in my room.

The couch is 35” deep x 33” high x 80½” wide.

Side Table: 24” x 24” x 22” high.

Side bar (above fridge with coffee maker, sink) is 72” (50” from sink to end) x 24” deep x 36” tall.

Coffee table is oval 41” x 21” x 19”